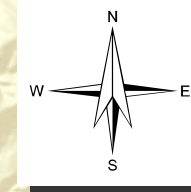


Calloway Creek Waterway

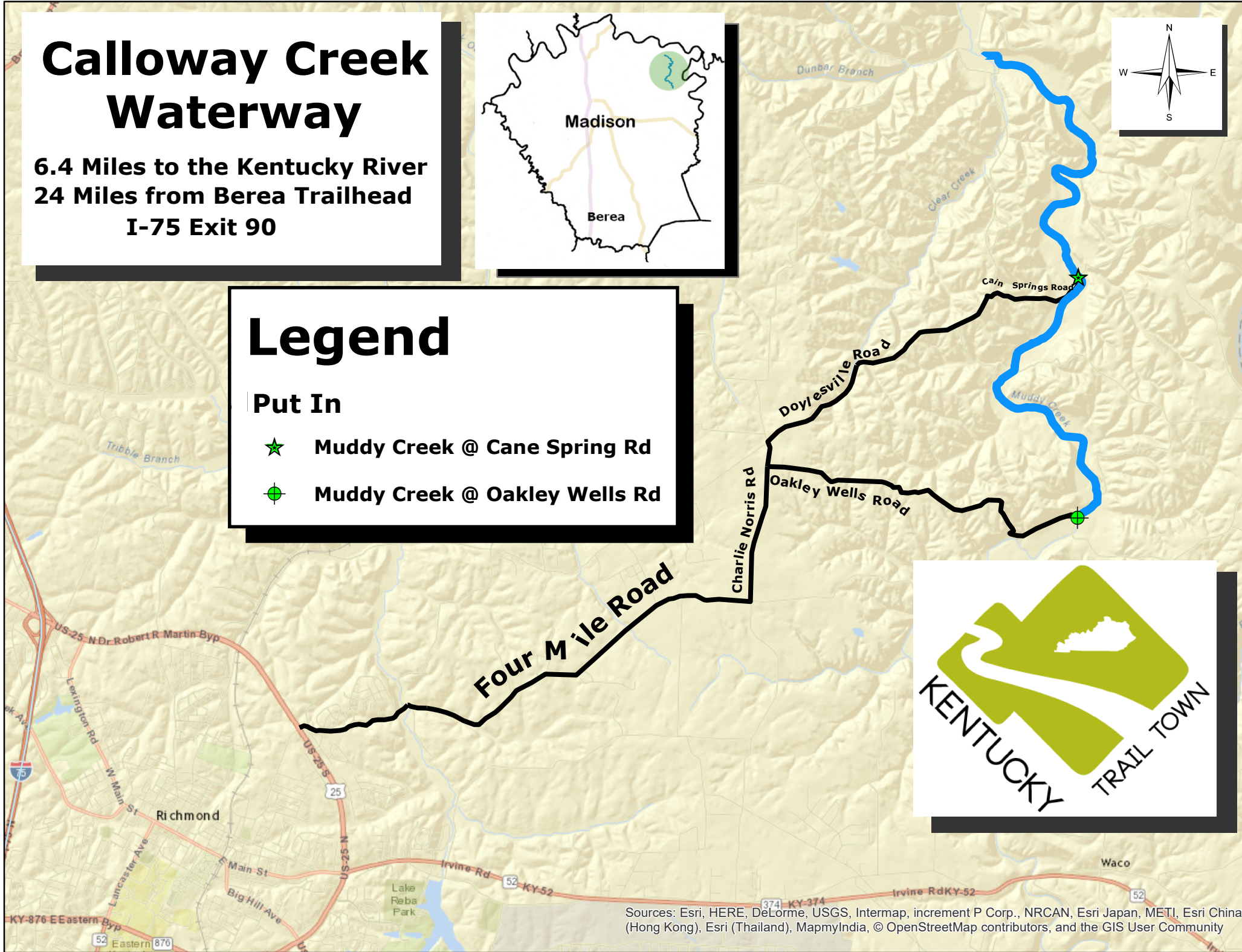
6.4 Miles to the Kentucky River
24 Miles from Berea Trailhead
I-75 Exit 90



Legend

Put In

- ★ Muddy Creek @ Cane Spring Rd
- Muddy Creek @ Oakley Wells Rd



Sources: Esri, HERE, DeLorme, USGS, Intermap, increment P Corp., NRCAN, Esri Japan, METI, Esri China (Hong Kong), Esri (Thailand), MapmyIndia, © OpenStreetMap contributors, and the GIS User Community